

Newsletter



Government of South Australia
Department for Education

Term 1 Week 11
11 April 2019

ASCOT PARK PRIMARY SCHOOL
R-7 SPECIALIST PHYSICAL EDUCATION & SPORT SCHOOL

Principal: Julie Hibell, Deputy Principal: Sam Kennedy

School Values

Respect • Responsibility • Excellence



Download our free Skoolbag app to get all the latest news and events.



Visit our website:
www.ascotpkps.sa.edu.au



Like us on Facebook:
www.facebook.com/AscotParkPS

Diary Dates

TERM 2

April

12 Sports Day
Last day of school term
Early dismissal at 2:10pm

TERM 2

April

29 First Day Term 2

May

1 Music is Fun!
6 Pupil Free Day
9 True Colours LS8/9
13 NAPLAN commences
16 National Walk Safely to School Day



Out of School Hours Care (OSHC)

Before School Care: 7:00-8.30am

After School Care: 3.10-6pm

Pupil Free Days: 7.00am-6pm

OSHC bookings: Ring 0413 917 590
or email ascotoshc@gmail.com

Phew, it's nearly holidays! One more day – SPORTS DAY tomorrow. Please read the information carefully that was sent home yesterday.

SCHOOL REVIEW

Thank you to all staff, students and parents/carers who participated in our recent school review. The review panel was impressed with our positive school culture and it was clearly evident that staff have a shared commitment to the ongoing improvement of teaching and learning for our students. The panel also noted that we have a strong and active Governing Council and volunteer network. A full report will be made available later next term which we will publish on our new website.

TREE AUDIT

We have recently had a tree audit done and have a number of trees that need to be removed as they are classified as medium to high risk and pose a threat to safety. We are hoping this work will be done in the holidays. Please be assured that if a tree is removed we will be replacing it – so some areas may look bare for a while (eg the courtyard) until the new trees mature.

BREAKFAST CLUB

A big thank you to Janine and our band of our volunteers who come every Wednesday to provide breakfast for our students. **Remember that breakfast club starts at 8.15am** so please don't send your children to school before that as they will be sent to OSHC and you will be billed for this service.

KEEPING SAFE - SOCIAL MEDIA

With the holidays upon us it's, timely to remind our students about being safe when out playing with friends, riding bikes and scooters and when online. Parents, please be vigilant and know what your child is doing online so that they are safe from strangers and also any cyber bullying that may occur. We continue these conversations with students at school and ask them to THINK...before they speak or post online.... Is it TRUE, HELPFUL, IMPORTANT, NECESSARY and KIND?

Have a great holiday and stay safe.



ASCOT PARK PRIMARY SCHOOL
R-7 SPECIALIST PHYSICAL EDUCATION & SPORT SCHOOL

1-37 Pildappa Ave Park Holme SA 5043

PH: 8276 3055

FAX: 8277 9007

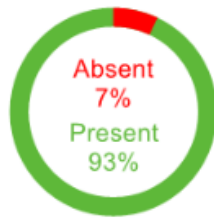
E-MAIL: dl.0340.info@schools.sa.edu.au

WEB: www.ascotpkps.sa.edu.au



Year to Date (2019)

The average daily attendance rate; Year-to-Date, derived from student attendance data sourced from the school systems as at 05/04/2019



Previous Week

Attendance rate derived from student attendance data sourced from the school systems as at 05/04/2019

**Support Ascot Park Primary School!
Get your new Entertainment Membership today.**

The 2019 | 2020 Entertainment Memberships are here, with exclusive offers for everything you love to do. It's our best Membership yet, packed with amazing offers for activities, attractions, shopping, travel and all kinds of tasty treats - from cool cafes to fabulous fine dining.

With Entertainment there are thousands of experiences you can enjoy, while raising funds for our school.

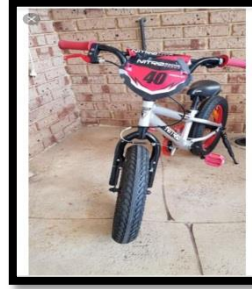
Adelaide Entertainment
SEE WHAT'S INSIDE 2019 | 2020 Membership Just \$70

STEPHANIE KITCHEN GARDEN FOUNDATION
Growing Harvesting Preparing Sharing

Our school has just finished constructing our community garden. We are now at the stage of beginning to plant a variety of produce. To enable that to happen we are calling upon our school community for donations. These can be garden tools, gloves, seeds etc. and can be dropped into our school office. Our new groundsperson Sarah will coordinate our garden program and will collect these items.

**Thankyou
Chris Fleetwood**

**MISSING
NITRO 40 PODIUM
CHILD'S BIKE**



**If found or seen, please call
0422 958 971**

COMMUNITY NEWS

FAMILY BY family

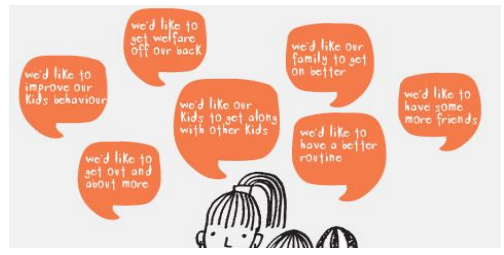
We link up families who have come through tough times with families who want things to change.

Family Events and Link ups are free

Want to be involved in Family by Family??

We are currently looking for people willing to share their time with another family

Contact Family Coach Leanne 0432043537 or Emma 0478109701 for a confidential chat.



Zumba Fitness with Emma

**Join the party every
Thursday 7:40 PM
Ascot Park Primary School**

**Ph: 0422 933 321
Web: emmasoubrier.zumba.com
f /Zumba-Fitness-with-Emma**

